

REPORT BULLYING



WHY REPORT BULLYING?

- ✓ The bullying may not stop without help.
- ✓ Children need a trusted adult to turn to when they are feeling threatened by a bully.
- ✓ Your child's school counselor or other health professional can help your child cope with the effects of being bullied.
- ✓ You can establish partnerships to help stop the bullying.
- ✓ To end the harmful effects of being bullied, which include:

DECREASED ACADEMIC ACHIEVEMENT

INCREASED THOUGHTS OF SUICIDE

HIGHER LIKELIHOOD OF DROPPING OUT OR SKIPPING SCHOOL

DEPRESSION AND ANXIETY

RETALIATION THROUGH EXTREMELY VIOLENT MEASURES

HOW TO REPORT BULLYING

IF IT HAPPENS AT SCHOOL:

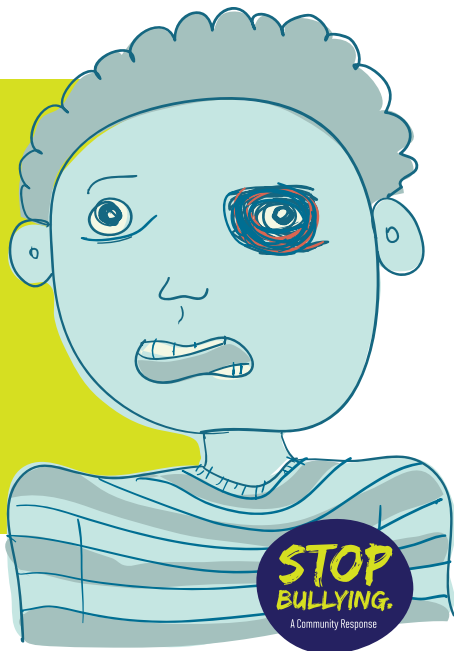
- ✓ Contact your child's teacher, the school counselor or an administrator.
- ✓ Complete the Bullying Incident Form.
- ✓ Forms available at www.fcps.org/forms or each school office.

IF IT HAPPENS OUTSIDE OF SCHOOL:

- ✓ Call 2-1-1 for additional community resource information.
- ✓ Contact law enforcement if threats or physical harm occur.

**BULLIED BOYS ARE 4X
MORE LIKELY TO BE
SUICIDAL AND BULLIED
GIRLS ARE 8X MORE
LIKELY TO BE SUICIDAL
THAN THEIR PEERS.**

(Bullying Prevention is Crime Prevention, 2003)



RESOURCES

WHO CAN HELP?

- ✓ Call 2-1-1 Maryland. Dial 2-1-1 for information on additional resources and to talk about bullying concerns.

TO REPORT BULLYING AT SCHOOL:

Contact your school counselor or another adult at school to make a report.

FOR OTHER HELPFUL PROGRAMS:

- ✓ Contact the Mental Health Association of Frederick County at 301-663-0011 for community education programs on bullying, cyberbullying and Internet safety.
- ✓ Contact Heartly House at 301-662-8800 for information on bullying prevention, including school presentations related to healthy relationships and positive friendships.
- ✓ Contact Community Alternative Mediation, Inc. (CALM) at 301-631-2256 for resolving disputes and classes on anger management and conflict resolution skills.

FOR AFTER-SCHOOL PROGRAMS:

Contact your school for program availability.

